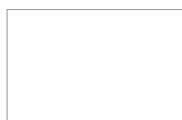
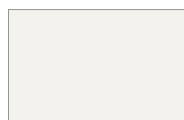


FINITURE

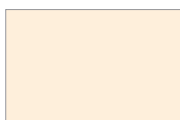
Polipropilene



R9010
Bianco puro



S020
Bianco



R9001
Bianco Crema



R7035
Grigio luce



R7040
Grigio medio



P421C
Grigio mandorla



S021
Grigio Perla



R7001
Grigio argento



S007
Grigio cemento



R7015
Grigio ardesia



S011
Antracite



S001
Nero



R8022
Nero carbone



R6013
Verde canna



S513
Verde militare



P557C
Verde acqua



S503
Azzuro polvere



S520
Blu universo



R3020
Rosso



S527
Rosso corallo



P7608U
Marsala



R2001
Arancio carota



R1012
Senape



R1034
Pesca



S529
Giallo oca



P480C
Cipria



S022
Tabacco

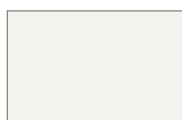


S514
Sabbia

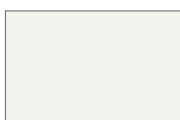
Metalli



01
Acciaio cromato



20
Bianco goffrato



30
Bianco opaco



7035F
Grigio luce fine textured



7040G
Grigio finestra



7016 F
Grigio piombo fine textured



7006F
Grigio tortora fine texture



1019F
Grigio beige fine textured



11
Antracite goffrato



03
Nero goffrato



31
Nero opaco



9004F
Nero fine textured



6013F
Verde canna



503F
Azzurro polvere fine textured



87
Blu universo



3009F
Rosso ossido fine textured



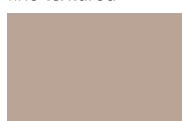
78
Rosso corallo



79
Giallo ginestra



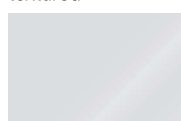
70
Cipria



514F
Sabbia goffrato



14
Ottone anticato



00L
Alluminio pulito

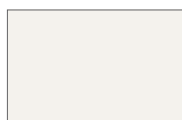


26
Alluminio nudo

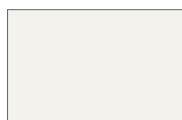


88
Alluminio spazzolato

Metalli da esterno



20-E
Biaco goffrato



30-E
Bianco opaco



7035F-E
Grigio luce fine textured



7006F-E
Grigio tortora fine texture



11-E
Antracite goffrato



31-E
Nero opaco



9004F-E
Nero fine textured



7016 F-E
Grigio piombo fine textured



6013F-E
Verde canna



6020F-E
Verde bosco



503F-E
Azzurro polvere fine textured



87-E
Blu universo



3009F-E
Rosso ossido fine textured



78-E
Rosso corallo



79-E
Giallo ocre



70-E
Cipria



514F-E
Goffrato sabbia

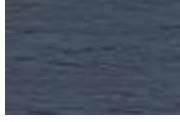
Massello di frassino



FRVAN
Frassino massello
naturale



FRTA72
Frassino massello
verniciato cipria



FRTA59
Frassino verniciato
grigio basalto



FRTA63
Frassino verniciato
azzurro grigio

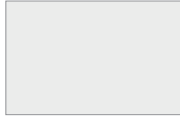


FRTA04
Frassino massello
verniciato nero

Massello di faggio



FGVAN
Faggio massello
naturale



FGLP06G
Faggio massello
laccato bianco
gofrato



FGLP27G
Faggio massello
laccato grigio
siliceo



FGTA04
Faggio massello
verniciato nero



FGLP04G
Faggio massello
laccato nero
gofrato

Rovere massello + Multistrato



FRVAN
Frassino naturale



FRTA28
Anthracite stained
ash



FRTA04
Frassino tinto
antracite



RVVAN
Rovere vero
naturale



ROVAN
Rovere naturale



ROTA59
Rovere verniciato
basalto



ROTA04
Rovere verniciato
nero



RVTA04
Rovere vero tinto
nero



V008
Cherry Walnut



V004
American walnut

PIANI TAVOLO

Noce



NOVAN
Noce

Rovere Heritage



RH03
Naturale



RH08
Nero

Frassino Heritage

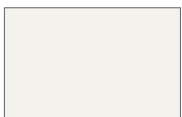


FRH01
Naturale



FRH02
Nero

MDF

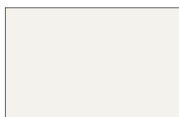


MDF13
Bianco goffrato



MDF14
Nero carbone
goffrato

MDF (solo per tavoli Waffle)



MDF03
Laccato bianco
goffrato



MDF02
Laccato nero
goffrato

HPL (bordo anima nera)



HPL02
Nero



HPL03
Bianco



HPL04
Antracite



HPL06
Giallo ocra



HPL08
Rosso ossido



HPL09
Grigio tortora



HPL10
Rosso corallo



HPL11
Blu universo



HPL12
Grigio silice

Laminato



LM01
Bianco



LM02
Nero



LM08
Grigio cemento



LM09
Acero

Fenix



FX01
Bianco

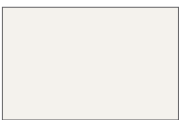


FX02
Nero



FX03
Antracite

Abs



ABS01
Bianco



ABS02
Nero



ABS03
Giallo Ocra



ABS05
Rosso ossido



ABS06
Blu universo



7040F
Grigio finestra

Fibra di vetro riciclata



RFS01
Grigio chiaro



RFS02
Marrone d'ecò

Marmo



MRM01
Bianco Carrara



MRM02
Nero Marquinia

A Panarea

Composition: 100% Polyester
 Width: ± 150 cm
 Weight: ± 320 g/m²
 Colour fastness to light: 4-5 (ISO 105-B02)
 Abrasion: > 50.000 rubs (ISO)

12947-2)
 Fastness to rubbing: dry 5, wet 4 (ISO 105 X12)
 Pilling: 5 (ISO 12945-2)
 Sound absorption: w 0,65 folded; w 0,55 not folded (ISO 354 - G-100)

Test ignifugo - Fireproof test (work in progress);
 1M - UNI 9175; classe 1 - UNI 9177; class 1 - EN 13773; EN 1021 part 1/2; BS EN 1021 part 1/2; BS 7176 + A1 medium hazard; BS 5852 cri b5;

BS 5867 part 2 type B; BS 5867 part 2 type C; NF-P 92 503 - Mt; NFD 60-013 (AM18); DIN 4102 - Bt; NFPA 701; NFPA 260 Class 1; California TB 117:2013; IMO MED 3.20 - Ftp 307 part 8;

IMO MED 319 - Ftp 307 part 7; ÖNOM B 3825 - schwer brennbar.



PAN002



PAN003



PAN100



PAN101



PAN105



PAN111



PAN201



PAN300



PAN305



PAN400



PAN403



PAN405



PAN600



PAN607



PAN700



PAN701



PAN702



PAN703



PAN800



PAN807

A Space

Composition: 100% PPR
 Height: 140 cm
 Weight per square meter: 240 g/m² (± 4%) (UNI 5114)
 Light resistance: 4-5 (ISO 105 B02)

Abrasion: 25.000 Martindale
 Pilling: 4-5 (ISO 12945-2)
 Fastness to rubbing: 4-5 (Dry) 4 (Wet) ISO 105-X12.
 The fabric's composition is entirely made of PPR,

ensuring its durability and performance.
 With a standard height of 140 cm, it is suitable for a variety of applications.
 Its weight per square meter

is precisely 240 g/m² with a minimal tolerance of ± 4%, adhering to the UNI 5114 standard, confirming its quality consistency.



No-shrink



SP900



SP801



SP800



SP708



SP705



SP704



SP702



SP700



SP605



SP604



SP602



SP600



SP504



SP406



SP403



SP402



SP400



SP304



SP303



SP302



SP111



SP100

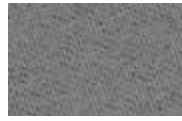
B Chili**Gabriel®**

Composition: 100%
Post-consumer recycled
polyester fr
Width: 140 cm
Abrasion: 60,000 – rubs
martindale (EN ISO 12947-2)

100,000 – double rubs
wyzenbeek (ASTM D4157)
(heavy duty upholstery)
Pilling: 4-5 – scale
1-5, max. 5 – EN ISO
12945-2

Light fastness: 5-8 – scale
1-8, max. 8 – EN ISO
105-B02
Rubbing fastness: 4-5 –
scale 1-5, max. 5 – EN ISO
105x12

Maintenance: wash or dry
cleaning P(W).
Chili is made of polyester
which is a material suited for
environments with special
requirements for cleaning.

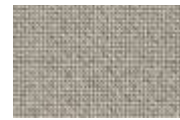
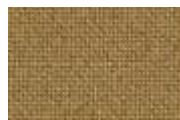
**CH60081****CH60083****CH60114****CH60115****CH60116****CH60117****CH60999****CH61171****CH61172****CH61173****CH61174****CH61175****CH62086****CH63092****CH63099****CH64199****CH64200****CH64201****CH64202****CH64203****CH66171****CH66172****CH66174****CH68189****CH68191****CH68193****CH68195****CH68196****CH68197****CH68198****B Cura****Gabriel®**

Composition: 100%
Post-consumer recycled
polyester
Width: 140 cm
Abrasion: 60,000 – rubs
martindale (EN ISO 12947-2)

100,000 – double rubs
wyzenbeek (ASTM D4157)
(heavy duty upholstery)
Pilling: 4-5 – scale
1-5, max. 5 – EN ISO
12945-2

Light fastness: 5-8 – scale
1-8, max. 8 – EN ISO
105-B02
Rubbing fastness: 4-5 –
scale 1-5, max. 5 – EN ISO
105x12

Maintenance: wash or dry
cleaning P(W).
Cura is made of polyester
which is a material suited for
environments with special
requirements for cleaning.

**CU60000****CU60019****CU60109****CU60110****CU60112****CU60999****CU61168****CU61169****CU61232****CU 61233****CU61257****CU61258****CU61259****CU61260****CU62082****CU62083****CU62125****CU62126****CU63012****CU63078****CU64196****CU64197****CU64240****CU65105**



CU66165



CU66169



CU66239



CU68181



CU68182



CU68261

B Eco Leather



Composition: 76%PVC - 2%PU - 22%PES
Width: 140 cm
Weight: g/m2 540 +/-10
Cycles (ISO 5470-2): 60000

Colour fastness to dry rubbing (ISO 105-X12): 4/5
Colour fastness to wet rubbing (ISO 105-X12): 4/5
Colour fastness to light (Xenotest - blu scale) (ISO

105-B02): 6
Adhesion (ISO 2411): > 40
Tensile strength (UNI EN ISO 1421): 600 long.
Tensile strength (UNI EN ISO 1421): 310 trasv.

Elongation at break % (UNI EN ISO 1421): 57 long.
Elongation at break % (UNI EN ISO 1421): 120 trasv.
Tear strength (UNI EN ISO 4674): 50 long.

Tear strength (UNI EN ISO 4674): 50 trasv.
Cycles (UNI 4818-13): 100000
Fireproof test: EN 1021-2:2006 / UNI 9175 classe

1 IM / BS5852-1:1979 part I - TB 117:2013



SE1007



SE1009



SE1019



SE1033



SE1035



SE1030



SE1014



SE1021



SE1031



SE1012



SE1023



SE1006



SE1018



SE1002



SE1001



SE1015



SE1024



SE1017

C Convert D



Composition: 100% Recycled polyester FR
Width: 150 cm ± 2%
Weight: 350 gr/m2 ± 10%
Light fastness: 6 (ISO 105-B02:2014)

Abrasion: 100,000 ±20% turns (ISO 12947)
Rubbing fastness: dry 4/5, wet 4/5 (ISO 105 X12:2016)
Pilling: 4/5 (ISO 12945)
Acoustics/Sound

absorption: UNI EN ISO 354:2003
Fireproof test (work in progress): Classe 1 Sipari, Drappeggi, Tendaggi - Classe 1 IM - Rapporto di

prova BS 5852 Crib N°5 using a CM Foam 35 Kg/cu.m. B1 DIN 4102 - EN 1021 Part 1-2 using a CM Foam 35 Kg/cu.m. Calif Bull117 June 2013 - M1 + NF D 60-

013:2006 AM18 - Azimut MED/3:19 MED/3:21: Draperies, Curtains and Bedding comp. MED annex A.1 item:A1/3.20 Upholstered Furniture



CO7057



CO7108



CO7109



CO7153



CO7155



CO7210



CO7211



CO7214



CO7310



CO7312



CO7313



CO7360



CO7462



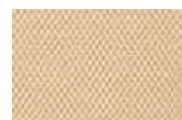
CO7468



CO7513



CO7514



CO7515



CO7558



CO7562



CO7613



CO7614



CO7615



CO7616

C Guest

kvadrat

Designer: Louise Sigvardt
 Composition: 100%
 poliestere riciclato
 Height: 140 cm
 Weight: 480 g/mtl
 Light resistance: 6 (ISO 1-8)

Durability: 100,000
 Martindale
 Pilling: 4 (ISO 1-5)
 LightFastness: 6 (ISO 1-8)
 Fire tests: US Cal. Bull.
 117-2013 • EN 1021-1/2 • IMO

FTP Code 2010 Part 8 •
 ASTM E84 Class A Adhered
 • AS/NZS 1530.3 • AS/
 NZS 3837 class 2 • SN 198
 898.5.2 with treatment • BS
 7176 Low Hazard • NFPA

701 with treatment • BS
 5852 part 1 with treatment
 • ASTM E84 Class A
 Unadhered • BS 5852 crib 5
 with treatment
 Fastness to rubbing:

5 (Dry) 4-5 (Wet)
 Seam slippage: 2.5 mm
 (warp), 3 mm (weft).



GU0110



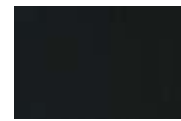
GU0120



GU0140



GU0150



GU0190



GU0210



GU0250



GU0270



GU0360



GU0420



GU0560



GU0760



GU0780

C Norfolk

VESCOM

Composition: 100%
 Polyester with flame
 retardant treatment Width:
 140 cm
 Weight: 775 g/mtl
 Light resistance: 6 (ISO)

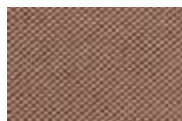
105-B02)
 Abrasion: 50,000 Martindale
 Pilling: 4 (ISO 12945-2)
 Fastness to rubbing: 4-5
 (Dry) 4-5 (Wet) ISO 105-X12
 Test ignifugo – Fireproof

test
 EN 1021/ 1-2
 BS 5852, crib 5
 NF P 92 / 503 – 507, M1
 DIN 4102, B1
 UNI 9175, classe 1,IM

Cal TB 117
 NFPA 260, class 1
 IMO 2010 FTP part 8



NF01



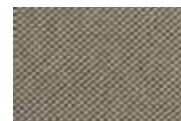
NF02



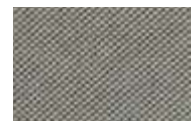
NF03



NF04



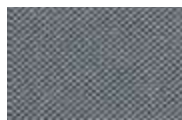
NF05



NF06



NF07



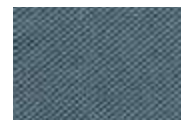
NF08



NF09



NF11



NF12



NF15



NF16

C Nuvole

Composition: 95% Polyester,
5% Cotton
Width: 140 cm
Weight: 785 g/mtl (±4%)
Light resistance: 4 (ISO
105-B02)

Abrasion: 55,000 Martindale
Pilling: 4 (ISO 12945-2)
Fastness to rubbing: 4-5
(Dry), 4 (Wet) (ISO 105-X12)
This fabric is composed

of 95% polyester and 5%
cotton, combining the
durability of polyester
with the softness and
breathability of cotton.
Its standard width of 140

cm makes it versatile
for various applications,
ensuring efficient material
usage. The weight of 785
g/mtl, with a tolerance
of ±4%, guarantees a

substantial, durable fabric
that is resilient in various
conditions.



No-shrink



NV100



NV111



NV303



NV306



NV400



NV401



NV404



NV405



NV406



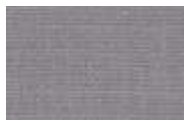
NV500



NV501



NV503



NV603



NV604



NV605



NV606



NV704



NV800



NV802



NV804



NV900



NV901



NV304

C Step

Composition: 100% Trevira
Total width: 140 cm
Width: 140 cm
Abrasion: rubs martindale
(EN ISO 12947-2)
100,000 double rubs

wyzenbeek (ASTM D4157-
07) (heavy duty upholstery)
100,000
Pilling: scale 1-5, max. 5 - EN
ISO 12945-2
Light fastness: scale 1-8,

max. 8 - EN ISO 105 B02
Rubbing fastness: scale
1-5, max. 5 - EN ISO 105x12
(wet/dry) 4-5/4-5
Maintenance: wash or dry
cleaning P(W).

Step is made of Trevira CS
which is a polyester material
suited for environments with
special requirements for
cleaning.



ST60021



ST60091



ST60092



ST60745



ST60999



ST61103



ST61149



ST61788



ST61789



ST61791



ST61793



ST62057



ST62744



ST62746



ST63012



ST63075



ST63738



ST63739



ST64159



ST64767



ST66018



ST66152



ST66763



ST66764



ST66765



ST67004



ST68121



ST68700



ST68798



ST68799

C Step Melange

Gabriel®

Composition: 100% Trevira
Total width: 140 cm
Width: 140 cm
Rubs martindale:(EN ISO 12947-2)100,000
double rubs wyzenbeek

(ASTM D4157-07) (heavy duty upholstery) 100,000
Pilling scale 1-5, max. 5 - EN ISO 12945-2 4-5
Light fastness: scale 1-8,

max. 8 - EN ISO 105-B02 5-7
Rubbing fastness: scale 1-5, max. 5 - EN ISO 105x12 (wet/dry) 4-5/4-5

Maintenance wash or dry cleaning P(W).
Step Melange is made of Trevira CS which is a polyester material suited for environments with special

requirements for cleaning.



SM60004



SM60021



SM60092



SM61103



SM61149



SM61151



SM61152



SM62057



SM62143



SM64159



SM64178



SM64179



SM64267



SM65011



SM65047



SM66018



SM67004



SM68119



SM68158



SM68165

C Velvety

abitex

Composition: 100% Polyester
Width: ± 150 cm
Weight: ± 200 gr/m²
Colour fastness to light: 7-8 (ISO 105-B02)
Abrasion: > 40.000 rubs (ISO

12947-2)
Fastness to rubbing: dry 4/5, wet 4/5 (ISO 105 X12)
Pilling: 5 (ISO 12945-2)
Sustainability: R.E.A.C.H., phthalate free.

Test ignifugo - Fireproof test (work in progress).
NFPA 280 Class 1.



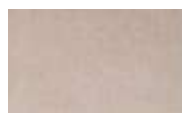
VE100



VE102



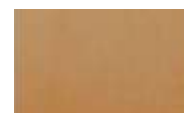
VE105



VE106



VE200



VE301



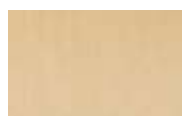
VE305



VE307



VE402



VE500



VE501



VE601



VE603



VE604



VE700



VE701



VE705



VE707



VE800



VE801



VE901

D Oceanic

camira

Composition: 100% post-consumer recycled polyester, including 50% SEAQUAL yarn
Weight per square meter: 497 g/m2 ±5% Heavy

duty / 10 year guarantee. Independently certified to ≥100,000 Martindale cycles
Fastness to Rubbing: Wet: 4, Dry: 4 (ISO 105 - X12)

Flammability: EN 1021 - 1&2 Cigarette & Match BS 7176 Low Hazard



OC01



OC02



OC03



OC04



OC05



OC06



OC07



OC08



OC10



OC11



OC12



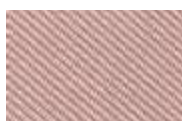
OC13



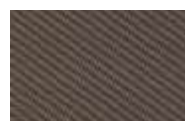
OC14



OC15



OC16



OC09

D Reflect

kvadrat

Designer: Patricia Urquiola
Composition: 100% poliestre riciclatu
Height: 140 cm
Selvedge: ↔
Weight: 430 g

Light resistance: 6-7 (ISO 1-8)
Abrasion: 100.000 Martindale
Colour: there may be slight differences.

Fireproof test AS/NZS 3837 class 1, ASTM E84 Class A
ASTM E84 Class B incollato
BS 5852 crib 5 con trattamento ignifugo, BS

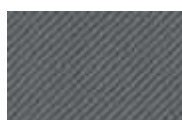
5852 part 1 con trattamento ignifugo, EN1021-1/2, US Cal. Bull.117-2013



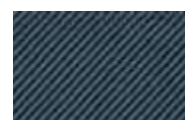
RF104



RF154



RF164



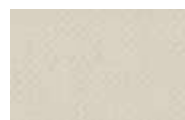
RF174



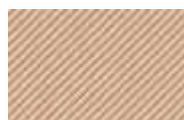
RF184



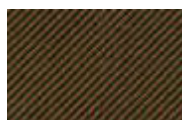
RF194



RF204



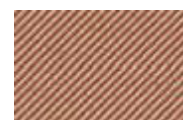
RF224



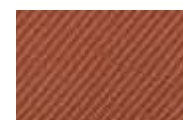
RF274



RF404



RF444



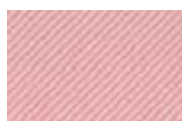
RF464



RF564



RF574



RF614



RF644



RF694



RF714



RF774



RF944



RF994

D Revive 1

kvadrat

Designer: Georgina Wright
Composition: 100% Recycl. polyester FR
Height: 140 cm
Selvedge:
Weight: 420 g/lin.m

Light resistance: 5-7 (ISO 1-8)
Abrasion: 80.000 Martindale
Colour: there may be slight differences
The enviroment: reduced

environmental impact
Fireproof test
BS 5852 part 1, ig. s. 0
DIN 4102 B1
EN 1021-1/2
IMO FTP Code 2010 Part 8

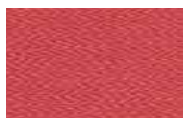
NF D 60 013 with treatment
UNI 9175 1IM
US Cal. Bull. 117-2013
ONORM B1/ Q1



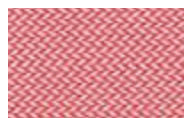
RV424



RV634



RV664



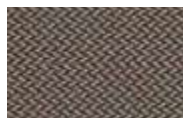
RV524



RV414



RV454



RV274



RV384



RV184



RV774



RV764



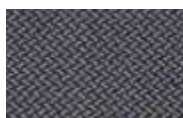
RV754



RV944



RV974



RV284



RV324



RV224



RV144



RV164



RV194

D Rolla

VESCOM

Composition: 100% Recycled polyester FR
Width: 148 cm
Weight: 624 g/mtl
Light resistance: 6 (ISO 105-B02)

Abrasion: 70.000 Martindale
Pilling: 4-5 (ISO 12945-2)
Fastness to rubbing: 4-5 (Dry) 4-5 (Wet) ISO 105-X12
Test ignifugo - Fireproof test

EN 1021/ 1-2
BS 5852, crib 5
NF D 60-013 (AM 18)
DIN 4102, B1
UNI 9175, classe 1.IM
Cal TB 117

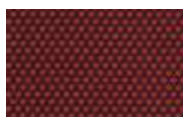
NFPA 260, class 1
IMO 2010 FTP part 8



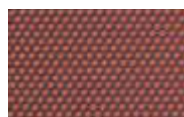
RL01



RL02



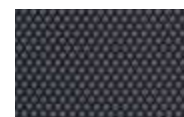
RL03



RL04



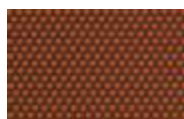
RL05



RL07



RL10



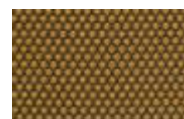
RL11



RL12



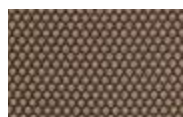
RL13



RL14



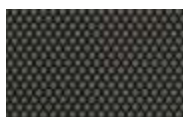
RL15



RL16



RL17



RL18



RL19



RL20

E Field 2

kvadrat

Designer: Alfredo Häberli
Composition: 100% Trevira
CS
Height: 140 cm
Selvedge:
Weight: 430 g/mtl

Light resistance: 6-7
(ISO 1-8)
Abrasion: 100.000
Martindale
Colour: there may be slight
differences

The environment:
reduced environmental
impact
Fireproof test
BS 5852 Crib 5
BS 5852 part 1, ig. s. 0
DIN 4102 B1

EN 1021-1/2
FAR 25.853
IMO FTP Code 2010 Part 8
NF D 60 013
NF P 92 507 M1
ONORM B1/ Q1

SN 198 898 5.2
UNI 9175 11M
UNI 9177 Classe 1
US Cal. Bull. 117-2013



FD132



FD142



FD182



FD192



FD222



FD233



FD242



FD343



FD373



FD443



FD463



FD623



FD643



FD662



FD663



FD723



FD733



FD773



FD782



FD843



FD943



FD963

E Volta Celeste

AURIM
TEXTILE ATTITUDE.

Composition: 100%
Recycled-Biodegradable
imNativ PL
Width: 140 cm
Weight: 950 g/mtl (±4%)
Light resistance: 4 (ISO)

105-B02)
Abrasion: 100.000
Martindale
Pilling: 4 (ISO 12945-2)
Fastness to rubbing: 4-5
(Dry) 4-5 (Wet) ISO 105-X12

Test ignifugo – Fireproof
test
TB-117:2013 California Test
This fabric is composed
entirely of Recycled-
Biodegradable imNativ PL,

making it an eco-conscious
choice that balances
sustainability with high
performance.
With a standard width of
140 cm, it is suitable for

diverse applications and
provides efficient material
usage. The weight of 950 g/
mtl, with a ±4% tolerance,
ensures a robust material
that maintains its quality.



No-shrink



VL100



VL105



VL309



VL404



VL406



VL408



VL409



VL410



VL411



VL600



VL601



VL603



VL606



VL804



VL805



VL811



VL900

E Yoredale

camira

Composition: 95% Wool, 3% Polyester, 2% Polyamide
Total width: 138 cm minimum
Weight per linear meter: 700 g/m2 ±5% ("Martindale") Abrasion

resistance. Heavy duty / 10 year guarantee. Independently certified to >50,000 Martindale cycles

Flammability EN 1021 - 1&2 Cigarette & Match
BS 7176 Low Hazard
ONORM B 3825 & A 3800-1 (58kg/m3 CMHR Foam)

UNI 9175 Classe 1 IM
BS 5852 Ignition Source 5 when FR treated
BS 7176 Medium Hazard when FR treated



YR01



YR02



YR03



YR04



YR12



YR14



YR16



YR17



YR18



YR20



YR25

F Canvas 2

kvadrat

Designer: Giulio Ridolfo
Composition: 90% New wool worsted, 10% Nylon
Height: 140 cm
Selvedge: 1
Weight: 480 g/mtl

Light resistance: 6-7 (ISO 1-8)
Abrasion: 100000 Martindale
Colour: there may be slight differences

The environment. In compliance with EU environmental regulations
Fireproof test AS/NZS 1530.3
BS 5852 ig. s. 2-3

DIN 4102 B2
EN 1021-1/2
IMO A.652(16)
NF D 60 013
NFPA 260
UNI 9175 1IM

US Cal. Tech. Bull. 117
ONORM B1/Q1



CV414



CV446



CV546



CV424



CV454



CV576



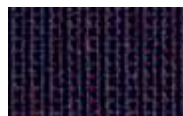
CV644



CV674



CV364



CV694



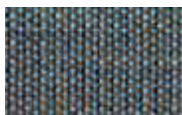
CV684



CV794



CV746



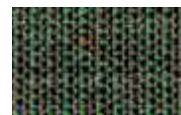
CV734



CV836



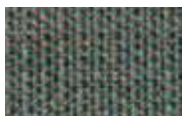
CV926



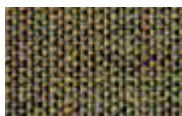
CV974



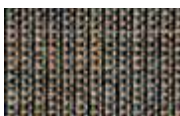
CV996



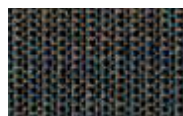
CV936



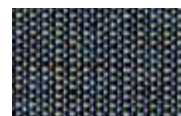
CV964



CV264



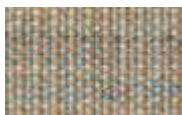
CV764



CV854



CV244



CV224



CV614



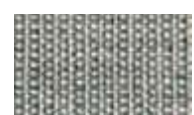
CV716



CV216



CV114



CV124



CV134



CV154



CV174

F Hero 2

kvadrat

Designer: Patricia Urquiola
Composition: 97% new wool
3% recycled nylon
Height: 140 cm
Weight: 580 g/mtl
Durability: 45,000

Martindale
Pilling: 3-4 (ISO 1-5)
LightFastness: 6 (ISO 1-8)
Fire tests: US Cal. Bull.
117-2013 • EN 1021-1/2 • NF
D 60 013 • IMO FTP

Code 2010 Part 8 • BS
5852 part 1 • ASTM E84
Class A Adhered • AS/
NZS 1530.3 • UNI 9175 11M
• NFPA 260 • ONORM B1/
Q1 • AS/NZS 3837 class

2 • EN 13 773 class 1 with
treatment • NFPA 701 with
treatment • SN 198 898 5.3
with treatment • ASTM E84
Class A Unadhered • BS
5852 crib 5 with treatment

Fastness to rubbing: 5 (Dry)
5 (Wet)
Absorption (100 mm)
0.55/Class D (Absorption
flat) - 0.80/Class B
(Absorption folded)



HE0102



HE0152



HE0162



HE0182



HE0192



HE0202



HE0212



HE0242



HE0312



HE0372



HE0392



HE0422



HE0432



HE0512



HE0542



HE0552



HE0582



HE0732



HE0752



HE0772



HE0782



HE0932



HE0942



HE0962

F Hero Heather

kvadrat

Designer: Patricia Urquiola
Composition: 97% new wool
3% recycled nylon
Height: 140 cm
Weight: 560 g/lin.
Durability: 45,000

Martindale
Pilling: 3-4 (ISO 1-5)
Light fastness: 6 (ISO 1-8)
Fire tests: US Cal. Bull.
117-2013 • EN 1021-1/2 • NF
D 60 013 • AS/NZS 3837

class 1 • IMO FTP Code
2010 Part 8 • BS 5852
part 1 • ASTM E84 Class A
Adhered • AS/NZS 1530.3 •
UNI 9175 11M • ONORM B1/
Q1 • EN 13 773 class 1 with

treatment • BS 7176 Low
Hazard • NFPA 701 with
treatment • SN 198 898 5.3
with treatment • ASTM E84
Class A Unadhered • BS
5852 crib 5 with treatment.

Fastness to rubbing: 4-5
(Dry) 4-5 (Wet)
Absorption: (100 mm)
0.55/Class D (Absorption
flat) - 0.80/Class B
(Absorption folded)



HH0113



HH0143



HH0153



HH0163



HH0183



HH0233



HH0373



HH0393



HH0423



HH0463



HH0533



HH0563



HH0663



HH0673



HH0683



HH0713



HH0733



HH0753



HH0773



HH0873



HH0893



HH0933



HH0953



HH0973

G Fiord

kvadrat

Designer: Louise Sigvardt & Tone Barnung
 Composition: 92% Wool, 8% nylon
 Width: 140 cm
 Selvedge: 1
 Weight: 500 g/mtl

Light resistance: 5-7 (ISO 105-B02)
 Abrasion: 60000 Martindale
 Colour: there may be slight differences.
 The environment: Naturele fibres / renewable resource

Fireproof test BS 5852 Crib 5 with treatment
 BS 5852 part 1
 DIN 4102 B2
 EN 1021-1/2
 IMO FTP Code 2010 Part 8

NF D 60 013
 UNI 9175 1IM
 US Cal. Bull. 117-2013
 AS/NZS 3837, class 2



FO101



FO171



FO191



FO271



FO451



FO521



FO581



FO751



FO771



FO971



FO991

G Steelcut Quartet

kvadrat

Giulio Ridolfo
 Composition: 90% new wool, worsted 10% nylon
 Height: 140 cm
 Selvedge:
 Weight: 770 g/
 Light resistance: 6-7

(ISO 1-8)
 Abrasion: 100.000 Martindale
 Pilling: 4-5 (ISO 1-5)
 Fastness to rubbing: 5 (Dry) 4-5 (Wet) ISO 105-X12
 Test ignifugo - Fireproof

test Fire tests AS/NZS 1530.3 AS/NZS 3837 class 2
 This fabric, designed by Giulio Ridolfo, blends 90% new worsted wool with 10% nylon, combining the natural

warmth and breathability of wool with the durability and resilience of nylon. The standard height of 140 cm and the presence of a selvedge edge ensure stability and efficient use for

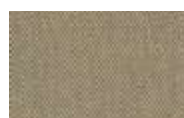
various applications. With a weight of 770 g/ , the fabric strikes a balance between substantiality and flexibility, suitable for diverse environments.



SQ0994



SQ0944



SQ0924



SQ0764



SQ0684



SQ0664



SQ0654



SQ0644



SQ0554



SQ0544



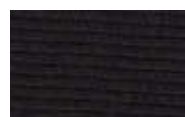
SQ0534



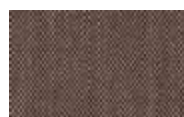
SQ0434



SQ0414



SQ0394



SQ0354



SQ0224



SQ0154



SQ0144



SQ0114

H Full-grain leather



Thickness: 1.3 - 1.5 mm
Leather size: Full
Typology: Semi-aniline, through dyeing aniline
Tanning: Chromium salts
Dry rub fastness, 500 cycles: ≥ 4 Grey Scale

Wet rub fastness, 80 cycles: ≥ 3/4 Grey Scale
Artificial solution rub fastness, 50 cycles: ≥ 3/4 Grey Scale
Fastness to light: ≥ 4 Blue Scale

Adhesion of finish dry: ≥ 2 N/10mm
Tear strength: ≥ 20 N
Flex resistance, 50.000 cycles: no cracks
Color fastness to water drop: ≥ 3 Grey Scale

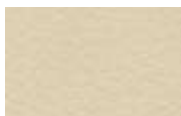
Flammability test: EN 1021-1, EN 1021-2, BS5852:Source 0, BS5852:Source 1, Cal TB117, NFPA 260/UFAC.



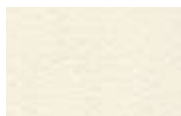
PR
Red



PC
Leather



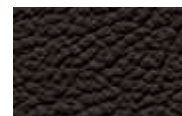
PB
Beige



PW
White



PT
Dove grey



PTM
Dark brown



PN
Black

H Safire

kvadrat

Category: Sahoo upholstery
Pattern: Solid
Composition: 43% viscose 17% polyacrylic 15% new wool 9% cotton 8% polyester 8% linen
Width: Approx. 140 cm

(Approx. 55")
Repeat: Approx. 0/0 cm (Approx. 0/0")
Weight: 1,010 g/lin. m (32.58 oz/sq ft)
Fire tests BS 5852 crib 5 with treatment • BS 5852

part 1 • EN 1021-1/2 • US Cal. Bull. 117-2013 • IMO FTP Code 2010 Part 8
There are differing requirements concerning the flame-retardancy of textiles dependent on the

area of application, country or even region.
Our textiles pass the majority of international standards and are also tested for a selection of regional requirements.

ISO 105-X12



SA0001



SA0002



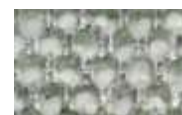
SA0003



SA0004



SA0005



SA0006



SA0007



SA0008



SA0009



SA0010



SA0011



SA0012



SA0013



SA0014



SA0015



SA0016



SA0017

Felt

PARKHAUSE

100% Wool



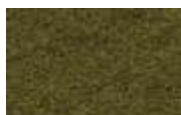
F009



F008



F015



F003



F011